

# Veteran's Day Parade

De-staging Maps

# Important De-staging Safety Notes

New protective road barriers limit options for exiting the parade area.

**Hazard:** Pedestrians and Vehicles **congest** the road south of Indian School Road

## **Control Measures:**

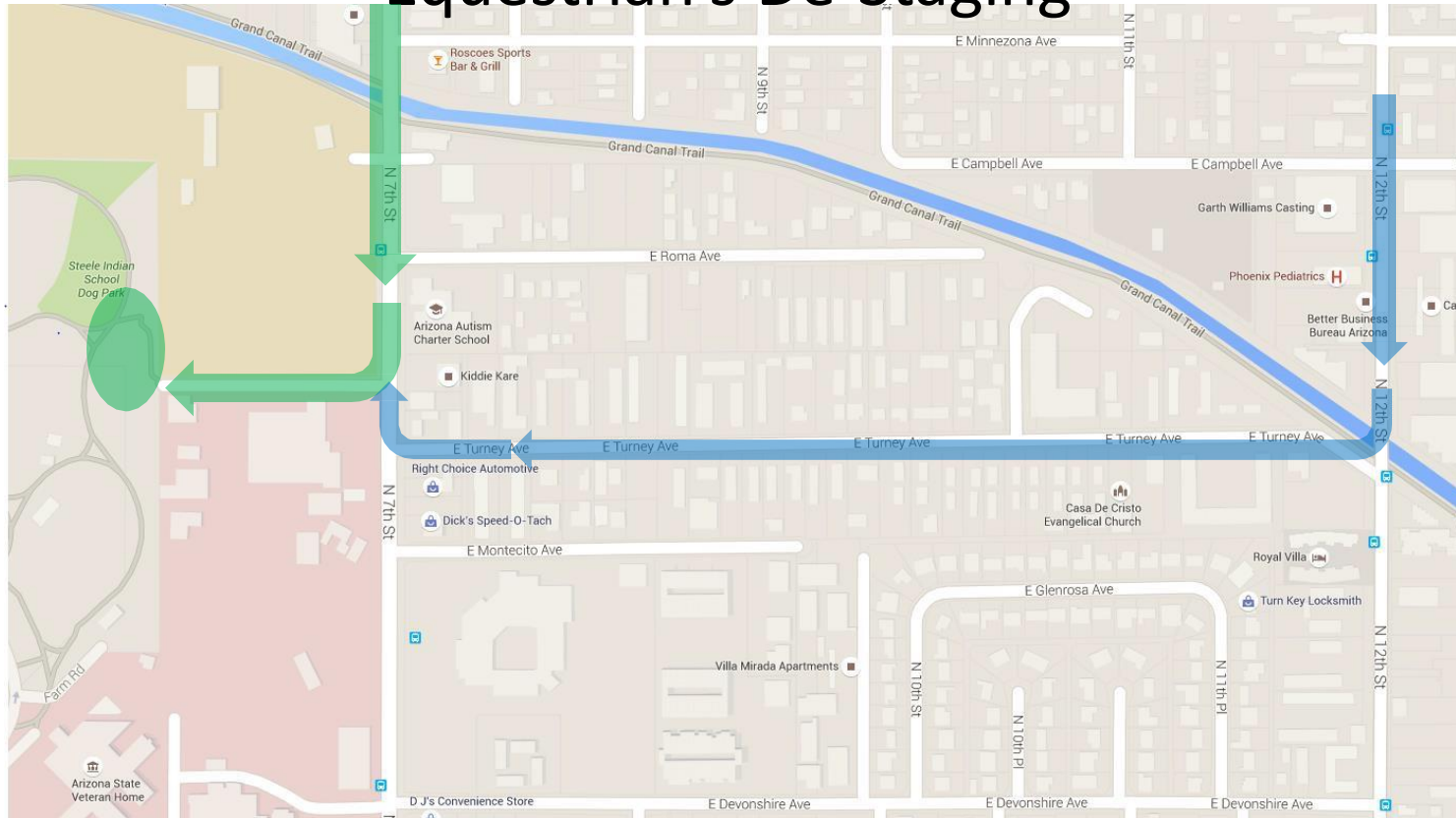
- **Pedestrians:**

- Quickly move to sidewalks after reaching end of parade.
- Do not load into vehicles while in the middle of the road. Move to sidewalk.
- Be mindful of moving vehicles. Most have blind spots and can't see you.
- Do not set equipment/instruments in the middle of the road.

- **Vehicles:**

- Move slowly through de-staging. Use a ground guide through congested areas!
- If loading walkers into your vehicle, pull all the way through the end of parade route and to one side.
- Don't block the road! The parade continues behind you and quickly backs up.
- Never back up without a ground guide.

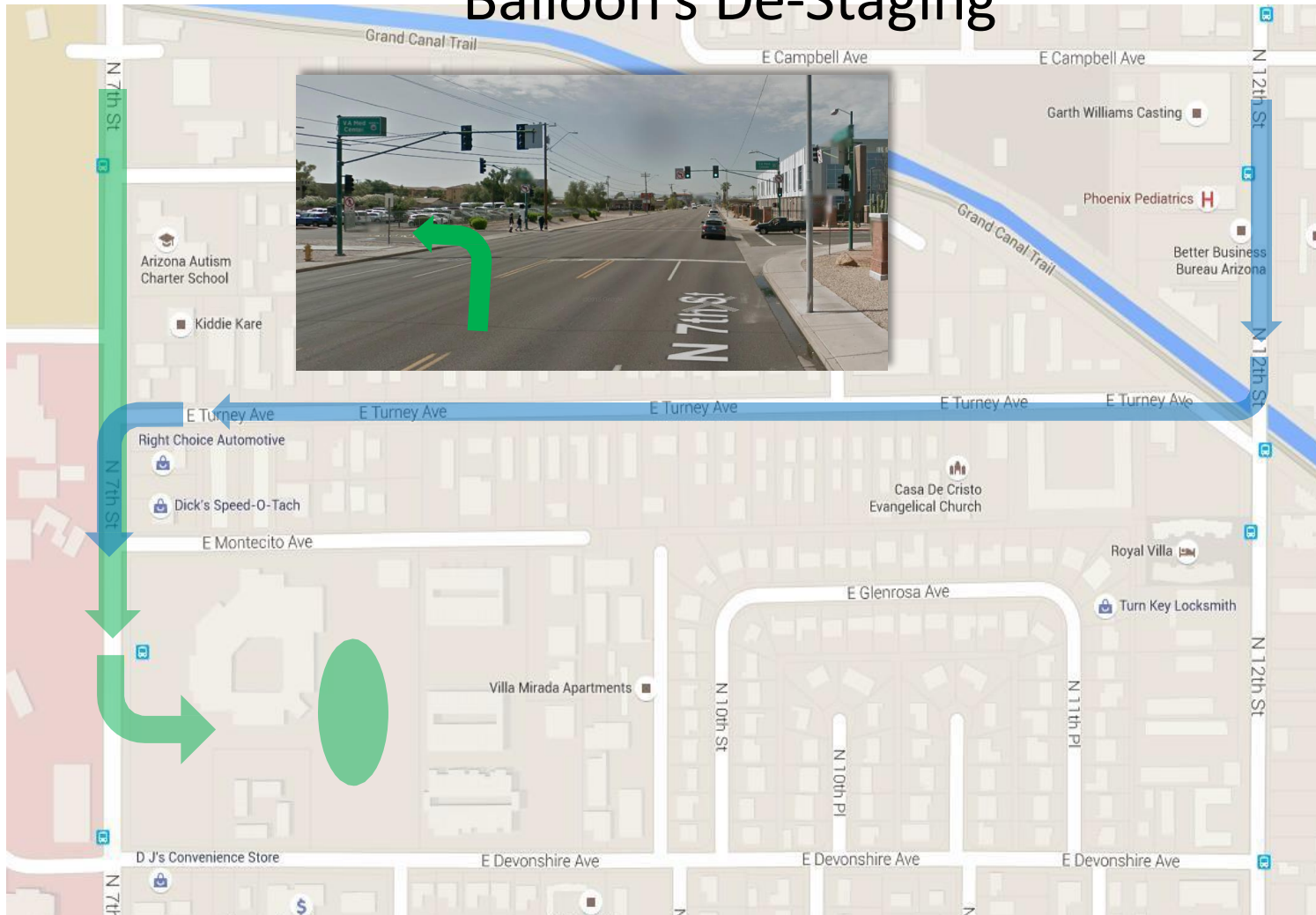
# Equestrian's De-Staging



Equestrian entries: leaving parade route by turning right (west) into Steel Indian School Park off 7<sup>th</sup> Street

Trailers: after dropping off parade entries, drive to Steel Indian School park via 12<sup>th</sup> Street. Take E Turney Ave to 7<sup>th</sup> Street, turn right (north), then left (west) into Steel Indian School Park

# Balloon's De-Staging



Balloon entries: turn left (east) into Montecito School at VA Med Center off 7<sup>th</sup> Street. Proceed to back field for deflating.

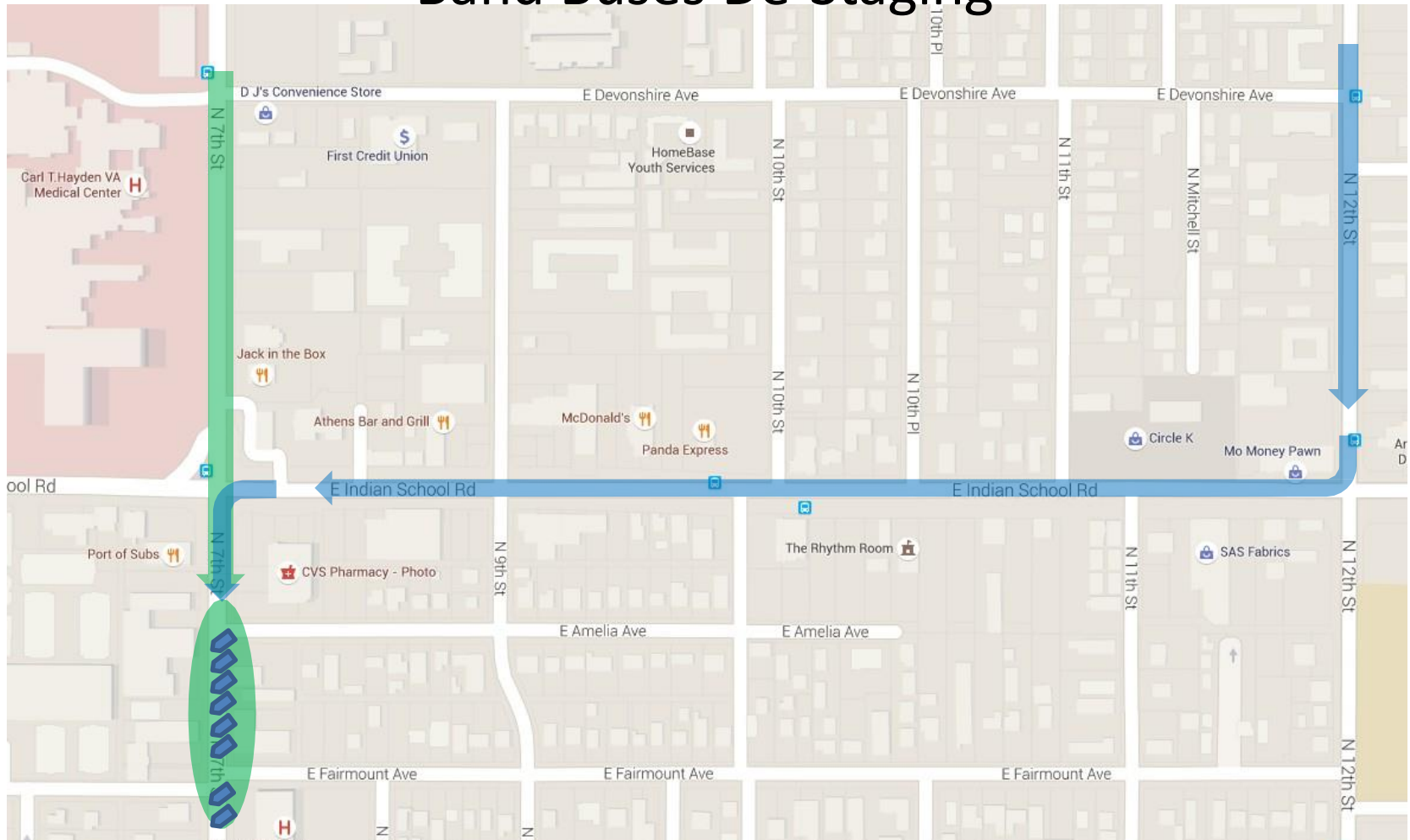
Trailers: after dropping off parade entries, drive to Montecito School via 12<sup>th</sup> Street. Take E Turney Ave to 7<sup>th</sup> Street, turn left (south), then left (east) on VA Med Center

# De-Staging Portable Latrine Placement



Latrines: place them on the east side of 7<sup>th</sup> Street, just north of E Devonshire Ave. Placement should make best use of sidewalk for ease of access.

# Band Buses De-Staging



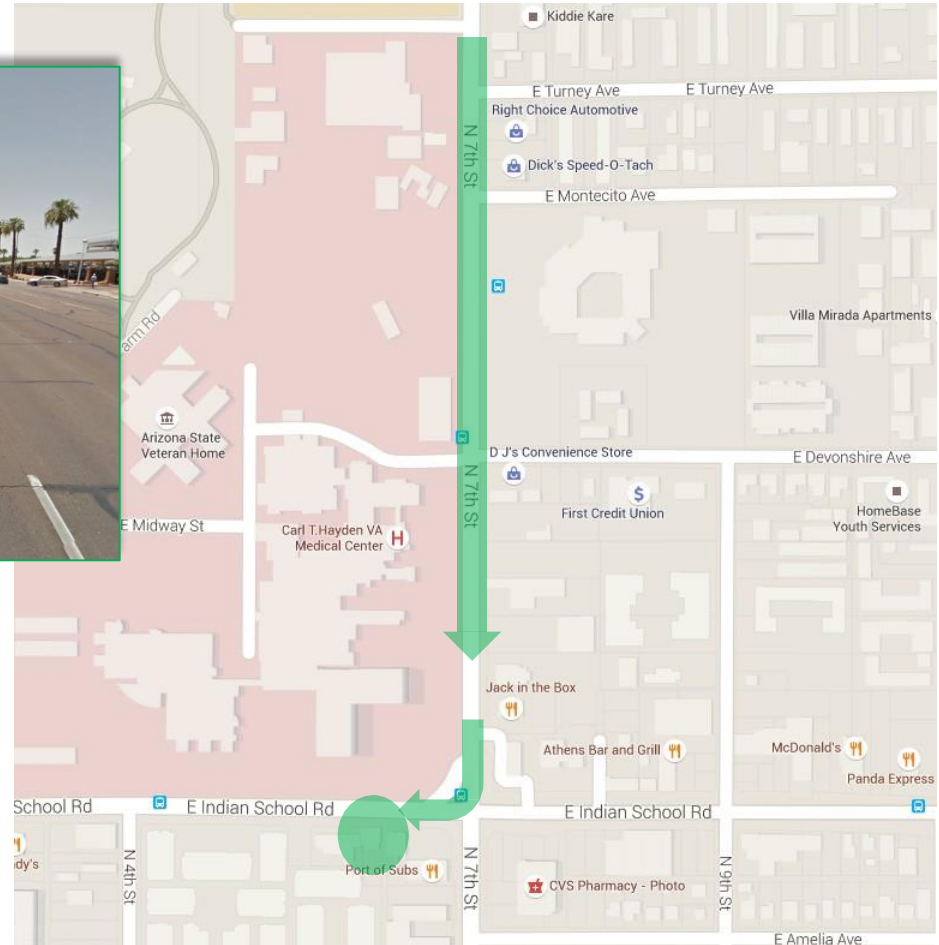
Band entries: continue south past Indian School Rd, buses are parked on east side of 7<sup>th</sup> St

Band Buses: after dropping off bands, take 12<sup>th</sup> Street to Indian School Rd then south on 7<sup>th</sup> street. Park diagonally on the east side of 7<sup>th</sup> Street facing southwest. Volunteers will assist you in backing. \* If road is closed, inform traffic officer you're with the parade and need to park inside.





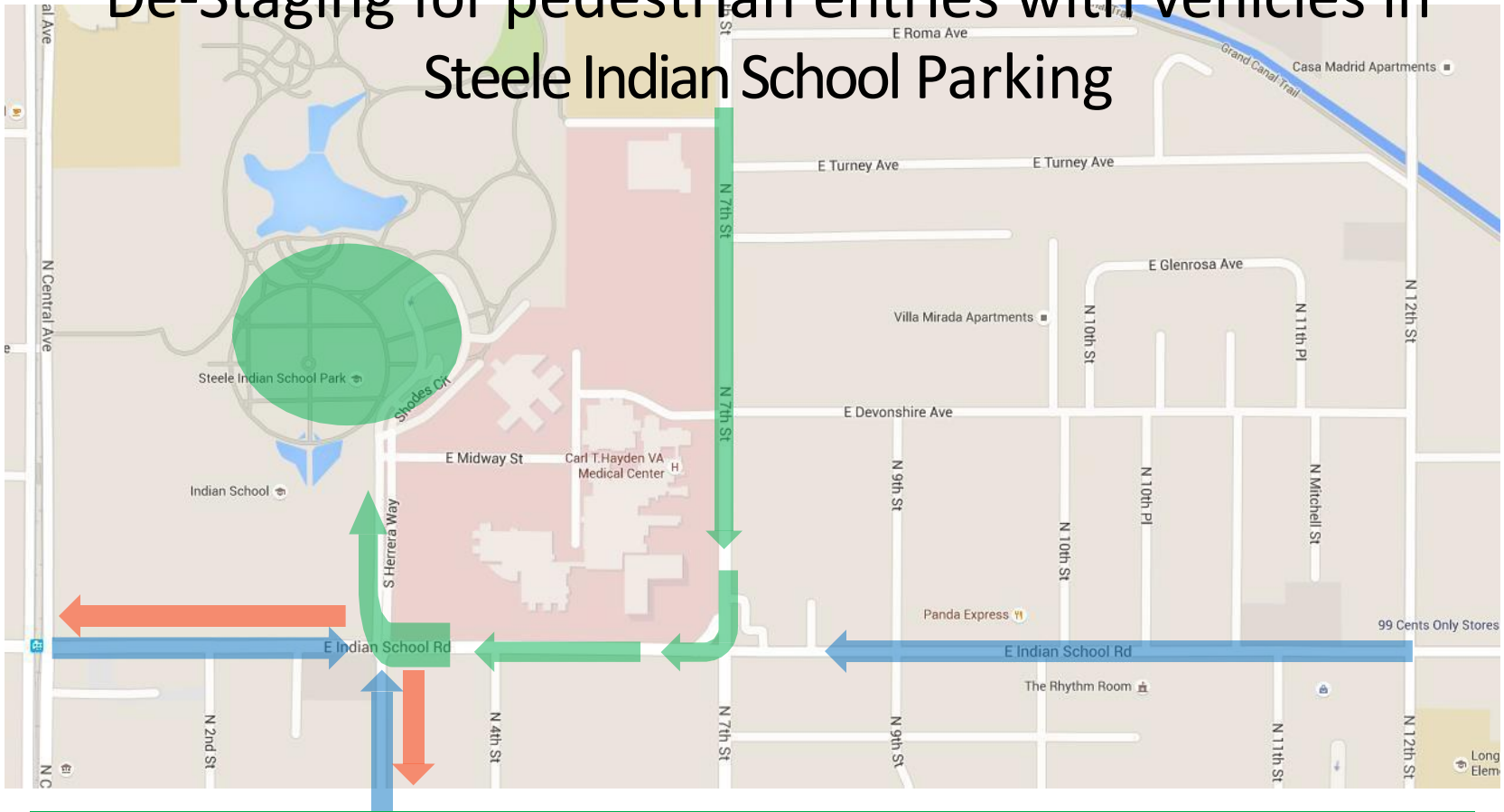
# Giant U.S. Flag De-Staging



U.S. Flag entry: turn right(west) on E. Indian School Rd and continue west to fold the flag on the south side of the



# De-Staging for pedestrian entries with vehicles in Steele Indian School Parking

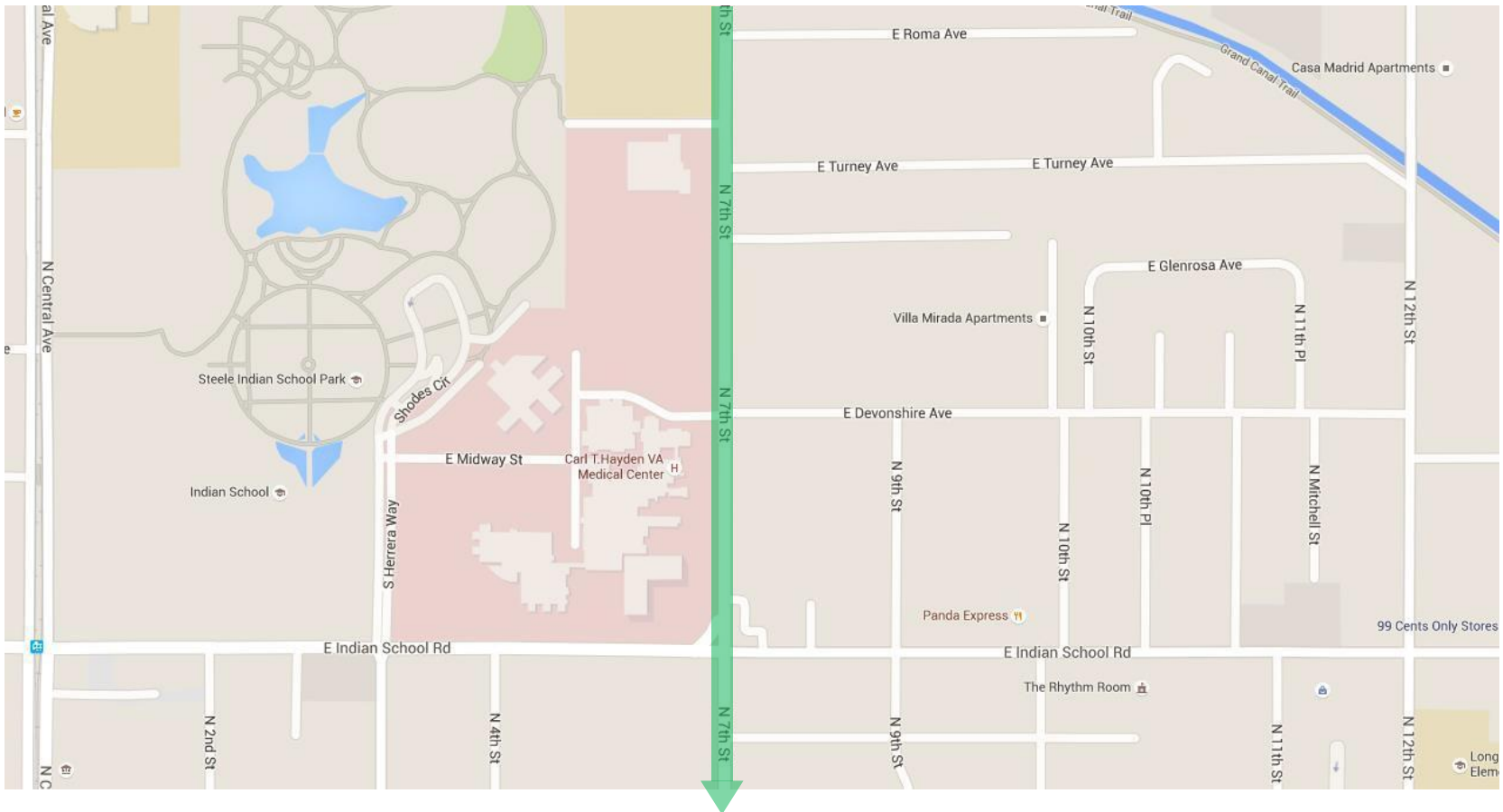


Entries with vehicles waiting in Steel Indian School parking lots: turn right(west) on E. Indian School Rd and continue west to 3<sup>rd</sup> St/ S. Herrera Way.

Prior to parade start, arrange for a vehicle to be left at Steel Indian School parking lot and transportation up to the staging area.

The only exits until the parade route re-opens are west on Indian School and south on 3<sup>rd</sup> St. Expect heavy traffic and delays at the intersection of Indian School and 3<sup>rd</sup> St

# Vehicles entries leaving de-staging



Most Entries in vehicles should leave the de-staging area by proceeding south to Osborne. If you have people who are walking beside your vehicle, do not stop at the end of the parade until you reach E. Fairmount Ave so that you don't impede parade traffic in the intersection.